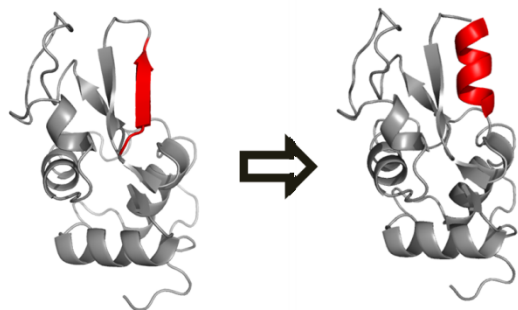


Protein design based on protein engineering techniques

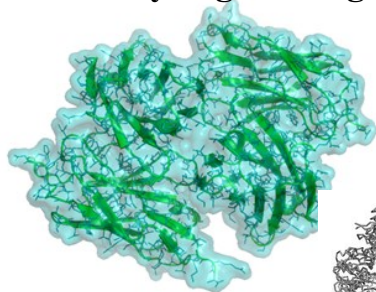
Associate professor **Koki Makabe**

Illustration

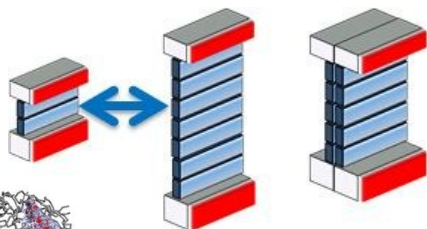
Protein design



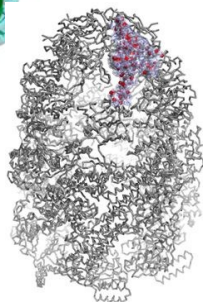
Antibody engineering



Novel nanomaterials



Chaperon function



Content:

Our lab is aiming to develop novel proteins based on protein engineering techniques. We have been investigating the sequence-structure relationship of protein using various spectroscopic techniques. The knowledge is critical to design a novel protein.

Yamagata University Graduate School of Science and Engineering

Research Interest : Protein engineering,

Protein design

E-mail : makabe@yz.yamagata-u.ac.jp

Tel : 0238-26-3237

Fax : 0238-26-3237

HP : <http://makabe.yz.yamagata-u.ac.jp>

