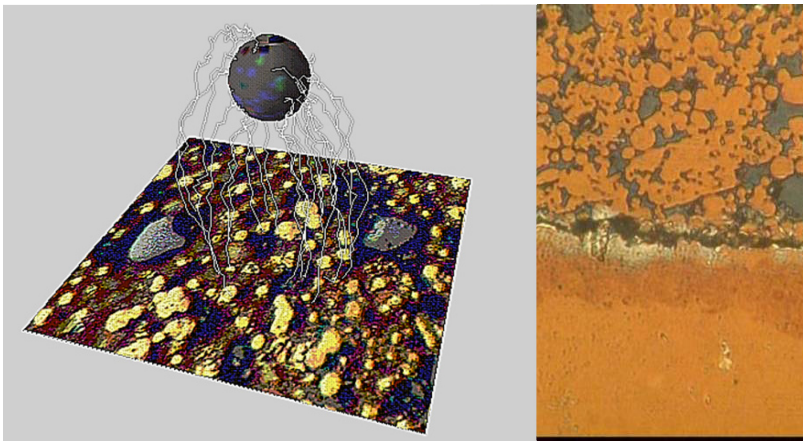
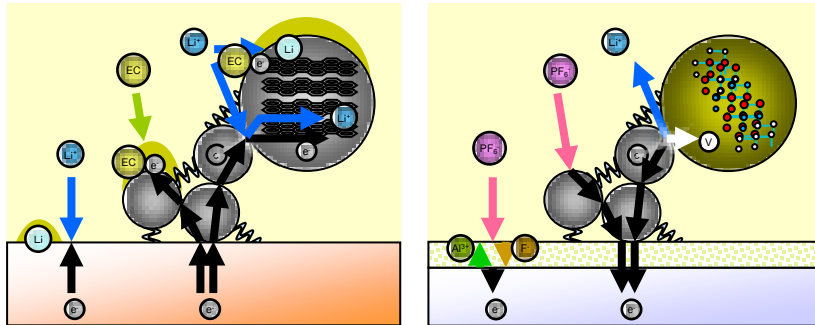
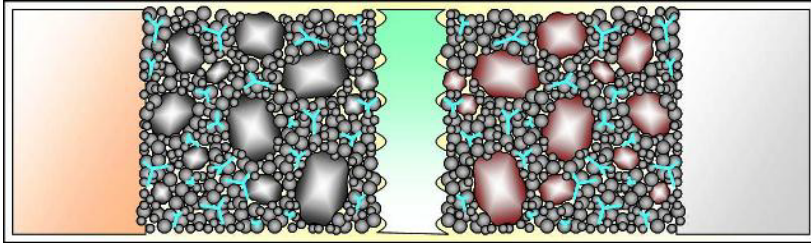


Conduction mechanism at interface of metal oxide

Associate professor Kazuhiro Tachibana



Content :

Lithium ion secondary battery, electric double layer capacitor, tantalum electrolytic capacitors, aluminum electrolytic capacitors, liquid crystal display...

To clarify the conduction mechanism at interface of metal oxide... it is guidelines for material selection and structural design of various energy devices.

we aim to contribute to industrial development.

Yamagata University Graduate School of Science and Engineering
Research Interest : Electrochemistry

E-mail: c1_lab@yahoogroups.jp

Tel : +81-238-26-3137

Fax : +81-238-26-3137

HP : <http://c1.yz.yamagata-u.ac.jp/>

